

DENE
COMMUNITY
SCHOOL



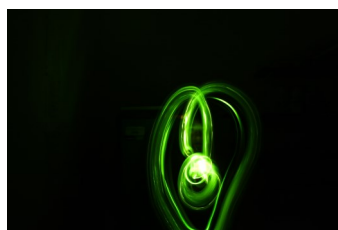
Dene Community School

Teacher of Art & Photography, Design Technology

Application Pack

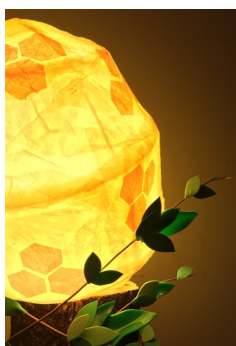


The Art/DT Department at Dene Community School are dedicated to delivering a supportive, exciting and engaging curriculum, which is designed to provide both challenge and support for all students. The breadth of the curriculum allows opportunities for creativity and independent learning. We aim for our students to feel part of a community, allowing them to grow in confidence and share a sense of pride in their achievements.



As a school, we seek to inspire our students through our dedication to them. We are committed to helping our students within - and outside of - curriculum time as we believe that every child deserves the opportunity to achieve their full potential.

We are looking to appoint a dedicated, inspirational and outstanding teacher to undertake the role of Art/DT Teacher. The successful candidate will share our community ethos and have an excellent knowledge of the curriculum.





Dene Community School

Contact Details

Mr D. Nelson
Head Teacher
Manor Way
Peterlee,
County Durham
SR8 5RL

Mr L Sowerby
Deputy Head Teacher

Whole School Results Analysis

	Dene	National
Whole School (5 A*-C Including English and Maths)	66%	58%
Maths Department (A* - C)	71%	67%
Maths Department (Expected Progress)	72%	66%
Maths Department (Above Expected Progress)	30%	30%

	Dene	National
Whole School (5 A*-C Including English and Maths)	66%	58%
English Department (A* - C)	75%	67%
English Department (Expected Progress)	86%	69%
English Department (Above Expected Progress)	43%	30%

Telephone: +44 (0) 191 5546000
email: enquiries@dene.durham.sch.uk
twitter: [@DeneCST](https://twitter.com/DeneCST)

