



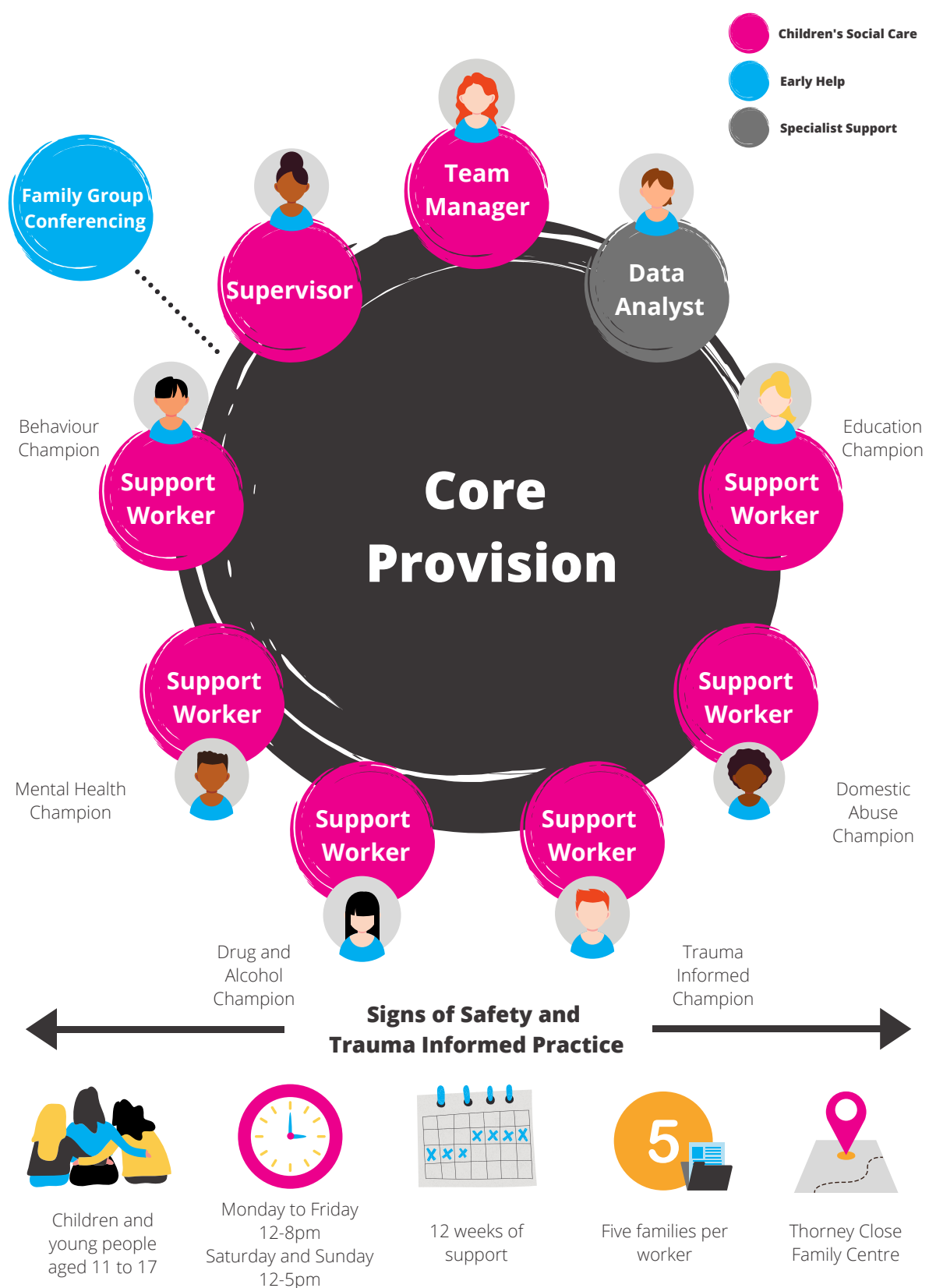
# Wear Together Recruitment Pack

Wear Together is a new, innovative service that seeks to change the way we support children and families in the most challenging circumstances and with the most complex needs.

# Wear Together

Together for Children’s investment in a new Wear Together team evidences our commitment to support children and young people “on the edge of care”, to help them stay at home with their families wherever possible.

Phase 1 (illustrated below) went live in August 2021, working together with young people and their families to support strong relationships and help young people stay in their home.





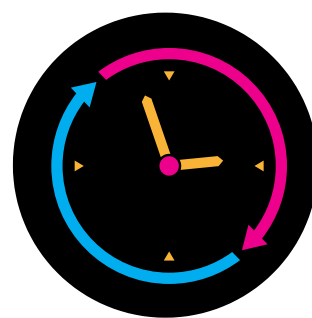
The team has been based in the community working with children and their families, where without additional support from the team, the young person might need to become Cared For.



We work together in partnership with the family and agency networks to provide short term support to build family relationships



We provide a central contact for children and families, to help maintain a holistic view of the child's needs

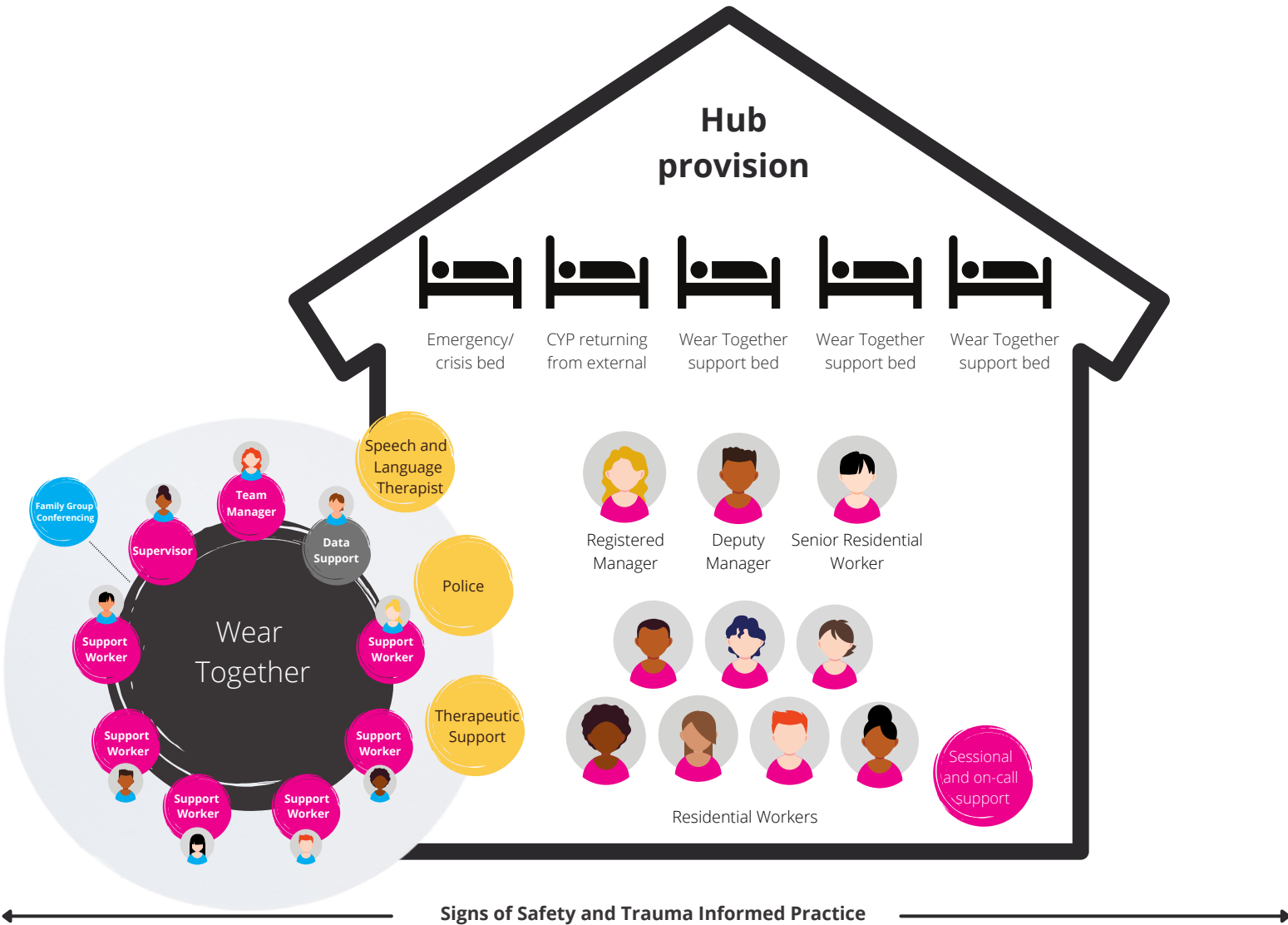


We offer out-of-hours and weekend support to ensure a rapid response to urgent and crisis situations which might otherwise result in the child becoming Cared For

Ready to reach our full aspirations

Phase 2 of Wear Together's development will see the introduction of a residential hub used for urgent, short-term care and respite with intensive packages and support for children and families.

Working within this model, you will be part of this new and exciting approach for robust family support to help young people stay together with their families.





## What will the impact be?

Together, we will:

- Reduce the instances in which a child becomes Cared For
- Enable children and young people to return to their permanent home in their community
- Improve support and outcomes for children, young people and families
- Increase the number of children and young people the team can work with
- Ensure services no longer work in silos, creating clear and direct links with partners
- Reduce the need for Cared For accommodation, which will reduce associated costs
- Increase team skills and specialisms
- Improve the quality and robustness of our work