

# South Tyneside Council Inclusion Service

## Recruitment Pack





## Inclusion Service

**We are excited to be introducing our Inclusion Service. A new approach to the support we offer our mainstream settings in South Tyneside.**

Feedback from our settings and our parents/carers has informed the development of this exciting new service, which will deliver an increased offer of advice and training on inclusive practice and specialist support and training in Social Emotional & Mental Health Needs, Communication & Interaction: Autism.

This pivotal service will help us to achieve continuous improvement and development of SEND, which focuses on ensuring that children and young people are able to reach their full potential, with services and support available to them when needed.

The Inclusion Service will provide a universal offer to settings across all phases of education, to enable consistency and continuity across the local area for all our children and young people.

The service aims to ensure all settings have the skills, training and knowledge they need to meet the needs of our children through a robust system of observation, recommendations, implementation and review.

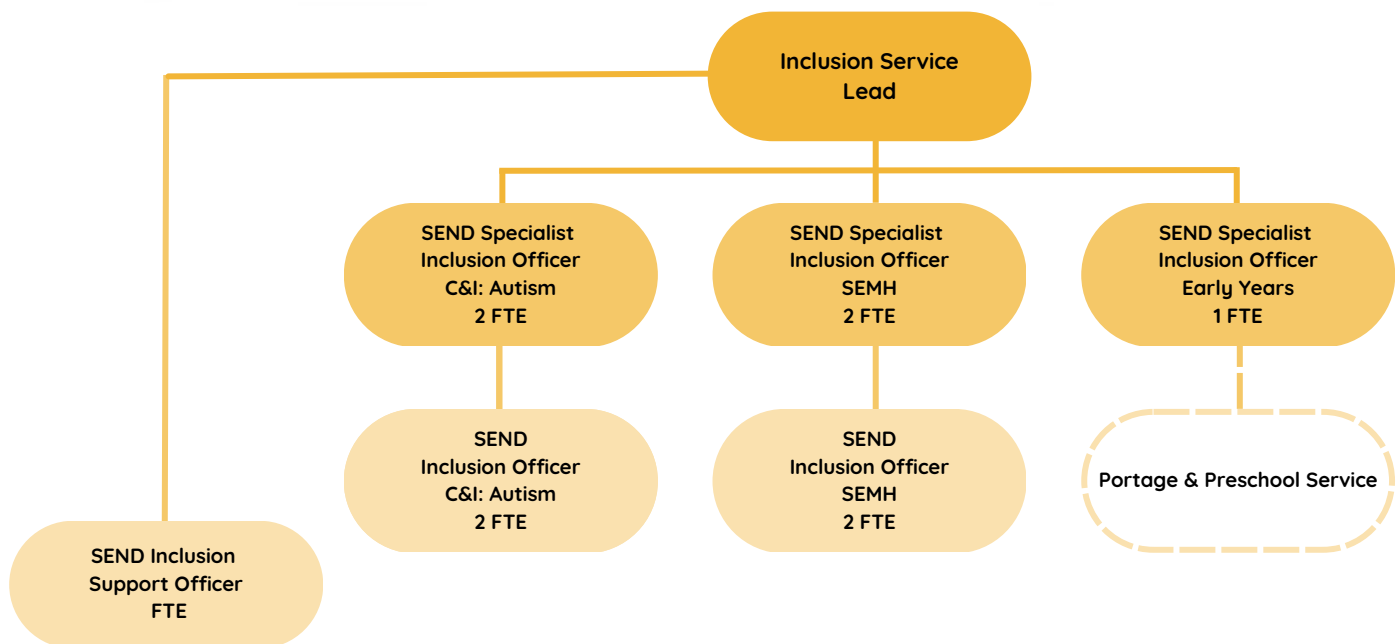
### SERVICE OBJECTIVES

- Provide high quality guidance and training regarding inclusive practice for all settings
- Support settings to develop whole school approaches to inclusive practice
- Support settings to implement supportive strategies for individual children and young people
- Provide objective feedback regarding the effectiveness of interventions in place through Top Up Funding
- Provide objective feedback regarding the suitability and appropriateness of placements for children and young people with an Education Health & Care Plan

**For an informal discussion about the service please contact:**

**Andy Ritchie, Service Manager - Access & Inclusion**  
Tel: 0191 424 6311  
E-mail: [andy.ritchie@southtyneside.gov.uk](mailto:andy.ritchie@southtyneside.gov.uk)

# Service Structure & Roles



## Working For South Tyneside Council

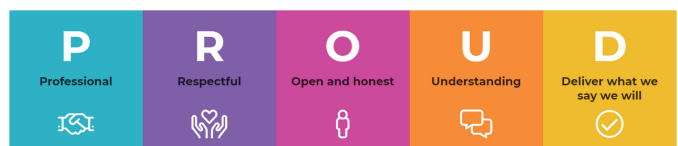
As a South Tyneside Council Employee you will receive an excellent benefits package including:

- Competitive rates of pay
- Annual leave: 26 days increasing to 31 after 5 years of continuous service, plus bank holidays.
- Flexible working opportunities, promoting a healthy work life balance
- Automatic enrolment to the Local Government Pension Scheme and associated benefits with options for Additional Voluntary Contributions\*  
\*(contribution rates vary according to salary)
- Broad and varied training and development opportunities for all employees
- You may be eligible for continuity of service
- Employee wellbeing support for mental and physical health
- Car lease scheme
- Home Electronics salary sacrifice scheme

As part of the Inclusion Service you will be integral to the shaping and development of this newly developed service.

South Tyneside Council has an agreed set of 'Values' to define what we stand for as an organisation and the things that are most important in terms of how we work and act.

We are PROUD to be:



# Our Vision for Children & Young People with SEND

Our vision is that every child in South Tyneside enjoys a full, healthy life with access to all the support they need to reach their potential. Families are well informed and resilient, know how to support their children/young people and find services and support when they need to.

We want South Tyneside to be a place where difference is celebrated, diversity is valued and inclusion in all aspects of life is valued, nurtured and grown.

Our vision for children and young people with SEND is ambitious and aspirational and we are committed to working in partnership with families and stakeholders to achieve this.

We are passionate and committed to ensuring that children and families with SEND are at the heart of service delivery, we are proud of what we have achieved, however we recognise there is more to do in realising our ambitions for all children and young people with SEND and their families.

Our six strategic goals for children and young people with SEND are:

**Education, Training & Employment:** Every child/young person is included in their setting and/or community. That they have education support tailored to their unique learning needs, so that they all learn, grow and achieve.

**Get Involved:** The experience and expertise of children and families is heard and respected, shaping how services and education settings work.

**Health & Wellbeing:** Children and young people get the bespoke health support they need to reach their potential and enjoy an active, positive life.

**Support & Care:** Families will get the support they need to grow their knowledge and care to build strong connections.

**Preparing for Adulthood:** Every young person grows into their own independence, achieve their goals and lives a full healthy life in their community.

**Information & Advice:** Families and young people get good information and advice at every step of their journey and can make informed choices, they connect with others to enjoy and learn.

