

South Tyneside Council SEND Inclusion Service

Recruitment Pack





SEND Inclusion Service

We are excited to be introducing our SEND inclusion Service. A new approach to the support we offer our mainstream settings in South Tyneside.

Feedback from our settings and our parents/carers has informed the development of this exciting new service, which will deliver an increased offer of advice and training on inclusive practice and specialist support and training in Social Emotional & Mental Health Needs, Communication & Interaction: Autism.

This pivotal service will help us to achieve continuous improvement and development of SEND, which focuses on ensuring that children and young people are able to reach their full potential, with services and support available to them when needed.

The SEND Inclusion Service will provide a universal offer to settings across all phases of education, to enable consistency and continuity across the local area of all our children and young people.

The service aims to ensure all settings have the skills, training and knowledge they need to meet the needs of our children through a robust system of observation, recommendations, implementation and review.

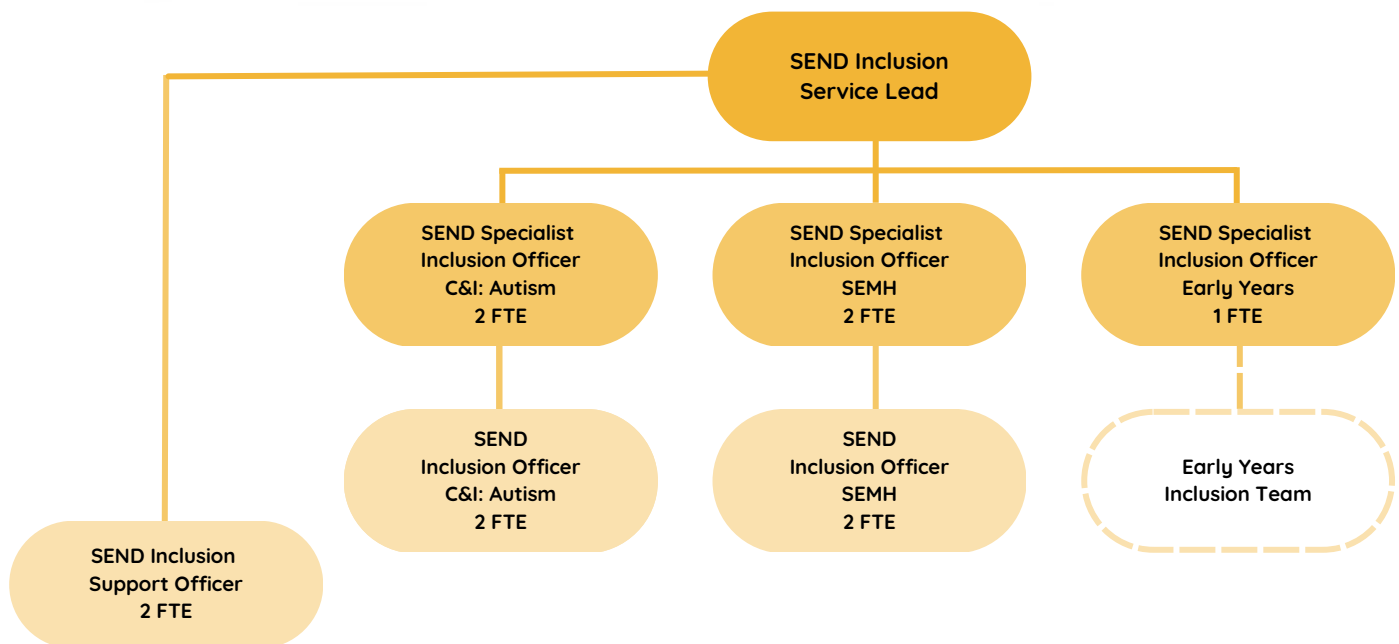
SERVICE OBJECTIVES

- Provide high quality guidance and training regarding inclusive practice for all settings
- Support settings to develop whole school approaches to inclusive practice
- Support settings to implement supportive strategies for individual children and young people
- Provide objective feedback regarding the effectiveness of interventions in place through Top Up Funding
- Provide objective feedback regarding the suitability and appropriateness of placements for children and young people with an Education Health & Care Plan

For an informal discussion about the service please contact:

Andy Ritchie, Service Manager - Access & Inclusion
Tel: 0191 424 6311
E-mail: andy.ritchie@southtyneside.gov.uk

Service Structure & Roles



Working For South Tyneside Council

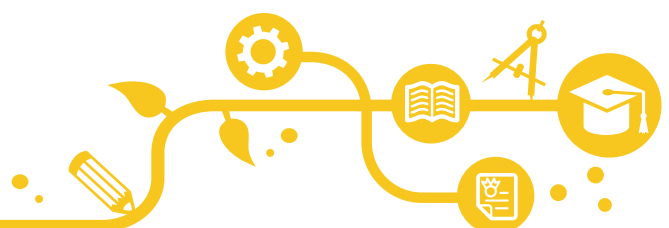
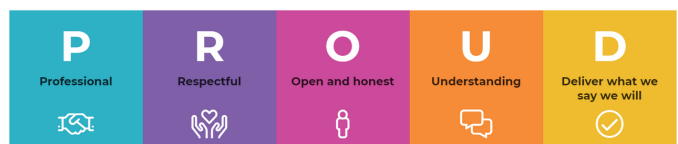
As a South Tyneside Council Employee you will receive an excellent benefits package including:

- A competitive rate of pay
- Annual leave: 26 - 31 days (After 5 years of service).
- Flexible working opportunities, promoting a work life balance which ensure work, works for you.
- You will automatically join the Local Government Pension Scheme (contribution rates are dependent on salary)
- Positive policy towards identifying and meeting the training needs of all its employees
- If you are currently employed at an alternative Local Authority you are eligible for continuity of service

As part of the SEND Inclusion Service you will be integral to the shaping and development of this newly developed service.

South Tyneside Council has an agreed set of 'Values' to define what we stand for as an organisation and the things that are most important in terms of how we work and act.

We are PROUD to be:



Our Vision for Children & Young People with SEND

Our vision is that every child in South Tyneside enjoys a full, healthy life with access to all the support they need to reach their potential. Families are well informed and resilient, know how to support their children/young people and find services and support when they need to

We want South Tyneside to be a place where difference is celebrated, diversity is valued and inclusion in all aspects of life is valued, nurtured and grown.

Our vision for children and young people with SEND is ambitious and aspirational and we are committed to working in partnership with families and stakeholders to achieve this.

We are passionate and committed to ensuring that children and families with SEND are at the heart of service delivery, we are proud of what we have achieved, however we recognise there is more to do in realising our ambitions for all children and young people with SEND and their families.

Our six strategic goals for children and young people with SEND

Education, Training & Employment: Every child/young person is included in their setting and/or community. That they have education support tailored to their unique learning needs, so that they all learn, grow and achieve.

Get Involved: The experience and expertise of children and families is heard and respected, shaping how services and education settings work

Health & Wellbeing: Children and young people get the bespoke health support they need to reach their potential and enjoy an active, positive life

Support & Care: Families will get the support they need to grow their knowledge, and care to build strong connections

Preparing for Adulthood: Every young person grows into their own independence, achieve their goals and lives a full health life in their community

Information & Advice: Families and young people get good information and advice at every step of their journey and can make informed choices, they connect with others to enjoy and learn

